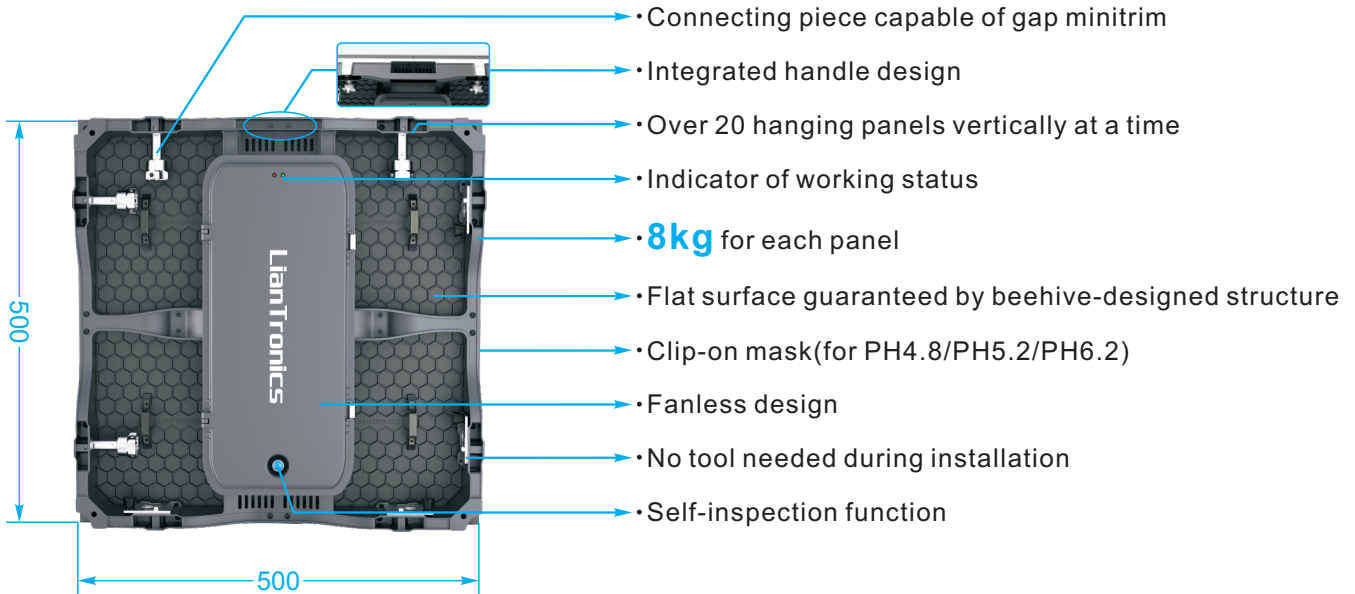


R3/R3II/R4/R5/R6 Slimmer and Lighter Stage Rental LED Display

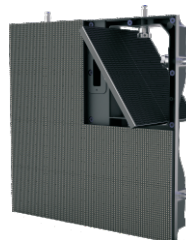


Key Benefits



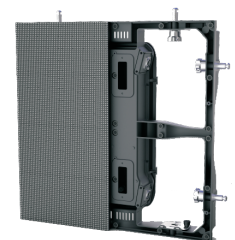
Magnet Design (optional)

Push the module from the back.



Special Structure

Take it out directly from the front or back.



Application



Specifications

Item	Value					Unit
Pixel Pitch	3.1	3.9	4.8	5.2	6.2	mm
Pixel Density	102400	65746	43264	36864	25600	pixels/m ²
Viewing Angle(H/V)	160/160	140/140	140/140	140/140	140/140	Deg.
Brightness	1200					nit
Drive Mode	1/16 scan	1/16 scan	1/13 scan	1/16 scan	1/8 scan	-
Grey Level	16					bit
Refresh Rate	1920					Hz
Brightness Adjustment	Manual/Auto/Programmable					-
Module Size(W×H)	250×250					mm
Module Size(W×H)	9.84×9.84					inch
Panel Dimension(W×H×D)	500×500×90					mm
Panel Dimension (W×H×D)	19.69×19.69×3.54					inch
Panel Resolution	160×160	128×128	104×104	96×96	80×80	pixels
Panel Type and Material	Die-casting aluminum					-
Panel Weight	8					kg
Hanging Panel Quantity(vertical)	≤20					panels
Avg. Power Consumption	250	240	150	150	150	W/m ²
Max. Power Consumption	750	720	450	450	450	W/m ²
Protection Grade	IP40					-
Operating Temp/Humidity	-20 ~ +40/10 ~ 90					°C/%RH
Storage Temp/Humidity	-40 ~ +60/10 ~ 80					°C/%RH
Lifetime(Normal Temp)	50000					hours
Compliant Standard	CE FCC RoHS TUV					-

*All specifications are correct at time of print, but they are subject to change without further notice. All rights are reserved to LianTronics.